

- If you are viewing this course as a recorded course after the live webinar, you can use the scroll bar at the bottom of the player window to pause and navigate the course.
- This handout is for reference only. Non-essential images have been removed for your convenience. Any links included in the handout are current at the time of the live webinar, but are subject to change and may not be current at a later date.

No part of the materials available through the continued.com site may be copied, photocopied, reproduced, translated or reduced to any electronic medium or machine-readable form, in whole or in part, without prior written consent of continued.com, LLC. Any other reproduction in any form without such written permission is prohibited. All materials contained on this site are protected by United States copyright law and may not be reproduced, distributed, transmitted, displayed, published or broadcast without the prior written permission of continued.com, LLC. Users must not access or use for any commercial purposes any part of the site or any services or materials available through the site.

Technical issues with the Recording?

- Clear browser cache using [these instructions](#)
- Switch to another browser
- Use a hardwired Internet connection
- Restart your computer/device

Still having issues?

- Call 800-242-5183 (M-F, 8 AM-8 PM ET)
- Email customerservice@SpeechPathology.com

continued



Childhood Trauma & Communication Virtual Conference

Guest Editor: Trisha L. Self, PhD,
CCC-SLP, BCS-CL

continued
ONLINE CONTINUING EDUCATION FOR THE LIFE OF YOUR CAREER



A Grassroots Framework to Address Adverse Childhood Experiences at the Community Level

Megan Dunn Davison, PhD, CCC-SLP

Moderated by:
Amy Hansen, MA, CCC-SLP, Managing Editor, SpeechPathology.com

continued



Need assistance or technical support?

- Call 800-242-5183
- Email customerservice@SpeechPathology.com
- Use the Q&A pod



How to earn CEUs

- Must be logged in for full time requirement
- Log in to your account and go to Pending Courses
- Must pass 10-question multiple-choice exam with a score of **80%** or higher
 - Within **7 days** for live webinar; within **30 days** of registration for recorded/text/podcast formats
- Two opportunities to pass the exam

A Grassroots Framework to Address ACEs at the Community Level

Megan Dunn Davison, PhD, CCC-SLP/L

Director of Continuous Improvement, United Way of
Central New Mexico

Research Associate Professor, Cradle to Career Policy
Institute, University of New Mexico

Disclosures

- Financial disclosures: I receive salary from the United Way of Central New Mexico. I am the Primary Investigator on an IMPACT grant through the Cradle to Career Policy Institute at the University of New Mexico.
- Non-financial disclosures: I am a member of the One ABQ Kids Cabinet and City Alive Workgroup with the City of Albuquerque and am a member of the ABC Community Partnership School Board subcommittee. I am on the Editorial Advisory Board of the Journal of Language, Identity, and Education.



Learning Outcomes

- Identify sources of data to measure ACEs
- Define “ready” framework and collective impact
- Identify social capital in community partners and leaders



Who are we?

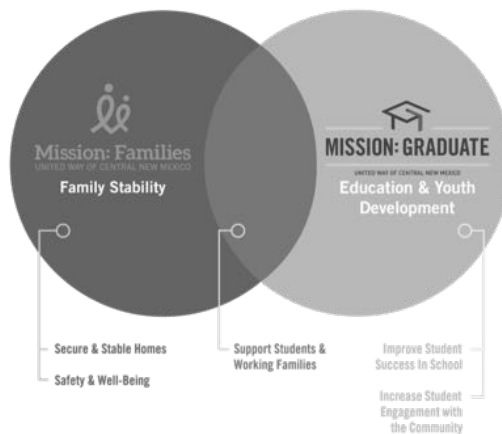
United Way of Central New Mexico and our community leaders and partners

United Way of Central New Mexico Purpose Statement

Families in central New Mexico have the resources to care for and support their children so they can succeed in education and life.

(Statement approved by UWCNM Board of Directors in 2017)

UWCNM Impact Agenda





Vision Council

Co-Chairs

Raúl Torrez
District Attorney, Bernalillo County

Helen Wertheim
Retired, Charter Insurance Services, Inc.

Members

RJ Berry, Former Mayor, City of Albuquerque

Elizabeth Kistin Keller, First Lady of Albuquerque

Clay Campbell, Chief of Staff to the County Manager, Bernalillo County

Dale Maxwell, President & CEO, Presbyterian Healthcare Services

Elsabeth (Lisa) Eden, VP and Treasurer, PNM Resources

Angela Merkert, Retired, Former Executive Director, CLNKids

Billy Gupton, Senior Financial Advisor, Merrill Lynch

Michael Richards, Vice Chancellor for Clinical Affairs, UNM Health System

Jason Harrington, CEO, HB Construction

Rodney Prunty, President & CEO, United Way of Central New Mexico

Jessica M. Hernandez, Attorney, Kennedy, Hernandez & Associates, P.C.

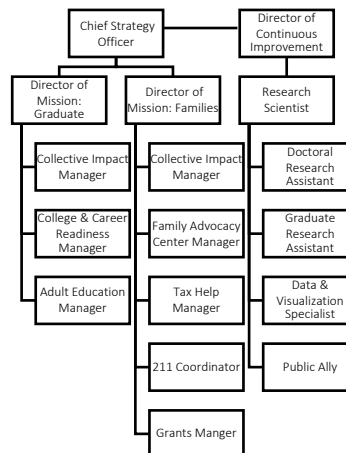
Mary Lynn Roper, Former President & General Manager, KOAT-TV

Guido Kemp, Commercial Banking Manager NM & El Paso, Wells Fargo

Mark Sellers, Associate Labs Director, Sandia National Laboratories



Organization Chart

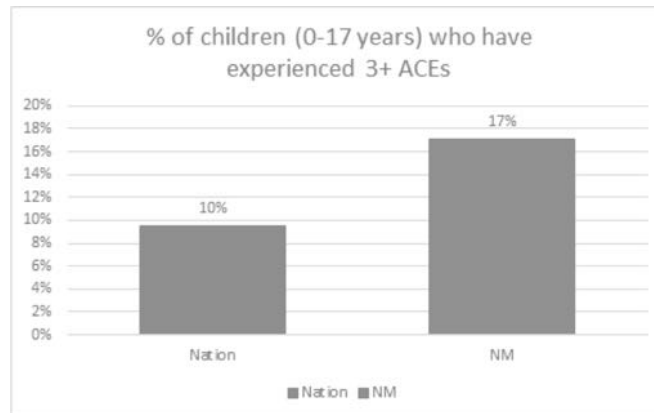


Using National and Local Data to Define a Community Result

National Survey of Children's Health (NSCH)

- National survey of children's physical and mental health, access to health care, the child's family, neighborhood, school, and social context
- Measures include
 - Physical, emotional, and sexual abuse
 - Physical and emotional neglect
 - Households with mental illness, domestic violence, parental divorce or separation, substance abuse, or incarceration
 - Treated unfairly due to race/ethnicity

10% of children experience 3 or more ACEs in the US



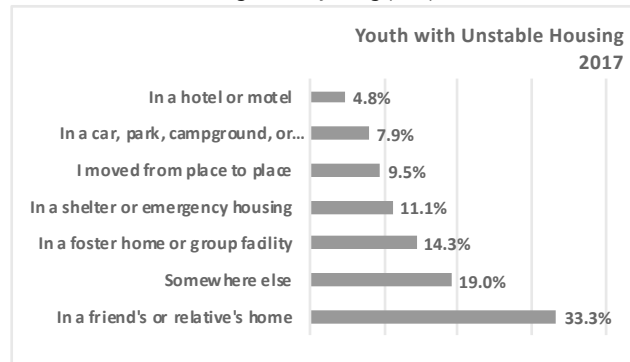
Source: 2017 National Survey of Children's Health; <http://www.census.gov>

Youth Risk and Resiliency Survey

- Assesses risk behaviors and protective factors of middle and high school students
- The YRBSS was designed to:
 - Determine the prevalence of health behaviors.
 - Assess whether health behaviors increase, decrease, or stay the same over time.
 - Examine the co-occurrence of health behaviors.
 - Provide comparable national, state, territorial, tribal, and local data.
 - Provide comparable data among subpopulations of youth.
 - Monitor progress toward achieving the Healthy People objectives and other program indicators.

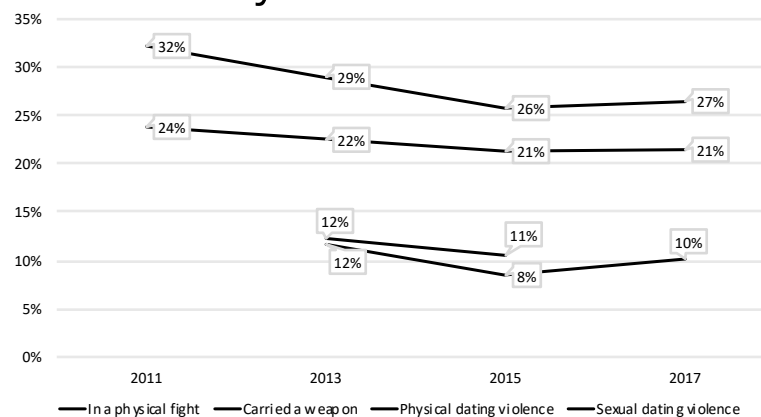
Housing Instability

7% of high school youth reported living in unstable housing.
Among those young people:



Source: NM Youth Risk and Resiliency Survey, <http://youthrisk.org>

Physical Violence

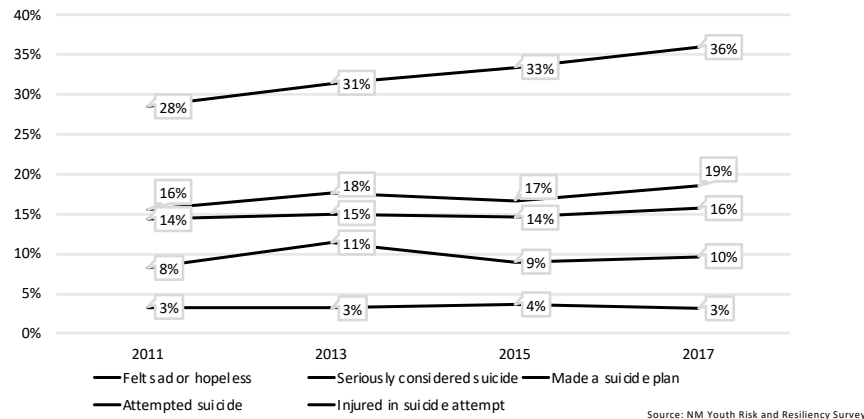


Source: NM Youth Risk and Resiliency Survey, <http://youthrisk.org>

continued

American Board of
Child Language &
Language Disorders

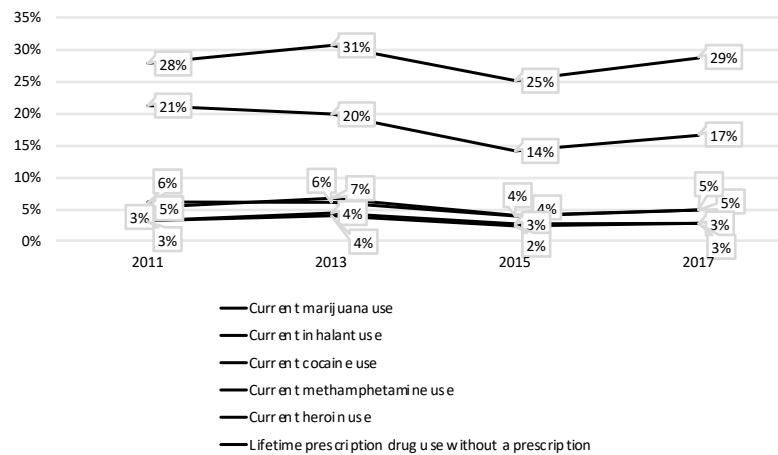
Mental Health



continued

American Board of
Child Language &
Language Disorders

Substance Abuse

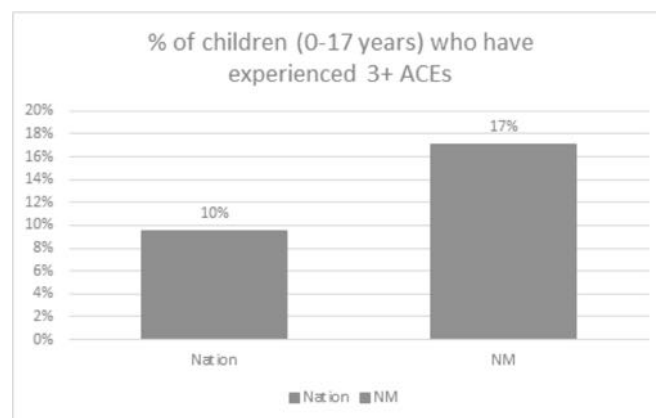


continued

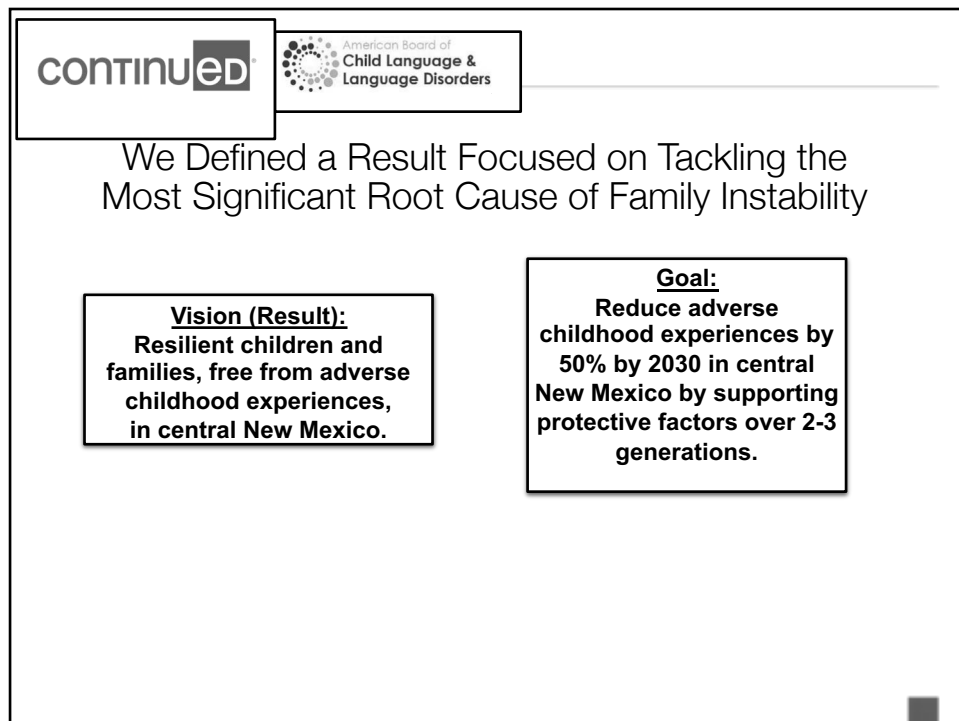
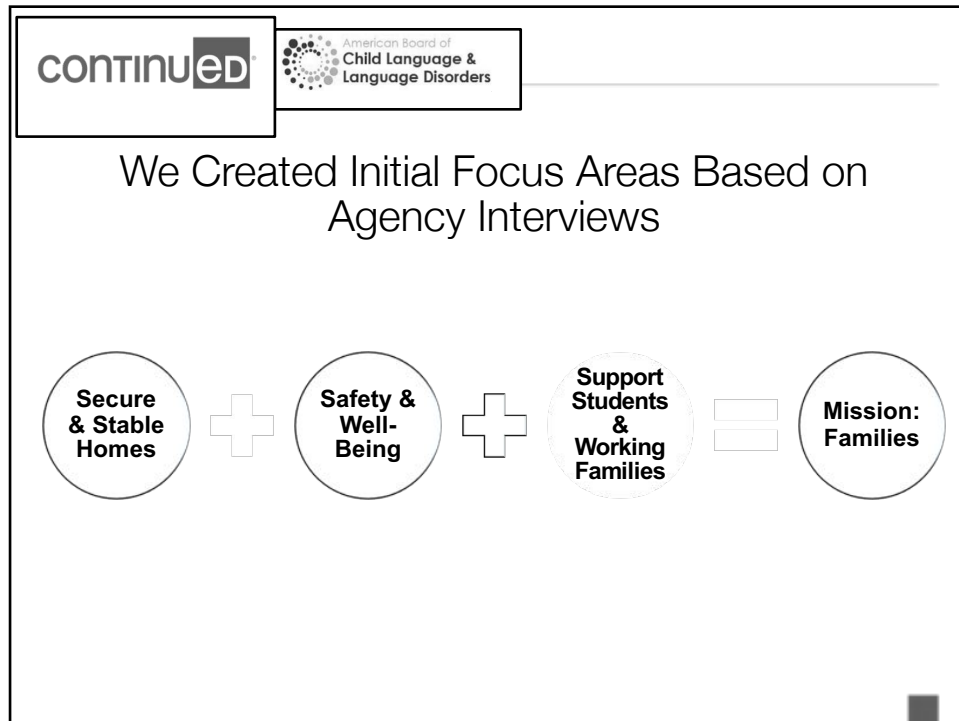
What did we do?

Describing and defining the grassroots framework

In Setting the Goal, We Challenged Our Community to
Do Better Than the Nation As a Whole



Source: 2017 National Survey of Children's Health; <http://www.census.gov>



continued

American Board of
Child Language &
Language Disorders

We Engaged Our UWCNM Community to Develop Strategies

3
Topical Strategy
Development
Sessions

135
attendees

57
community
organizations

1
Dialogue with
Youth & Families



1 Capstone Session

continued

American Board of
Child Language &
Language Disorders

We Gathered Insightful Feedback

Secure & Stable Homes



Safety & Well-Being



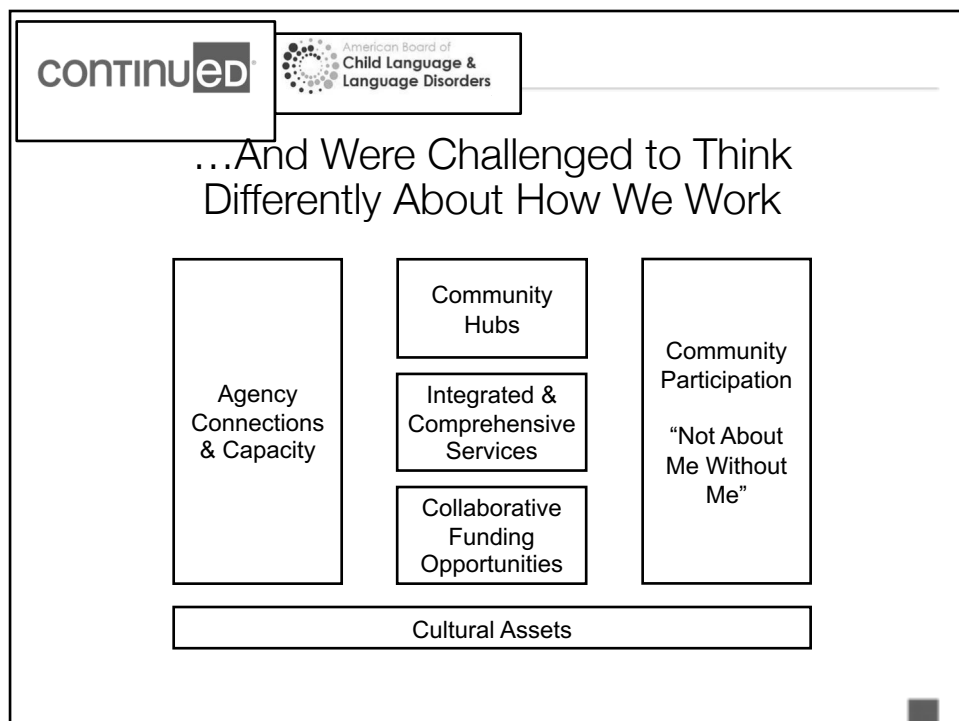
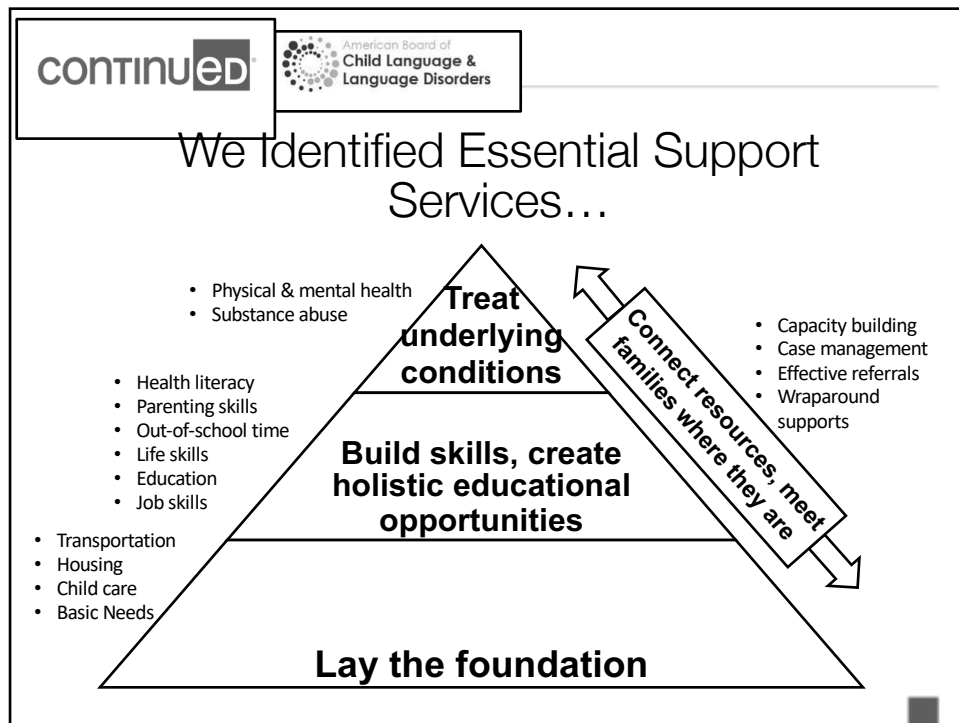
Support for Students and Families

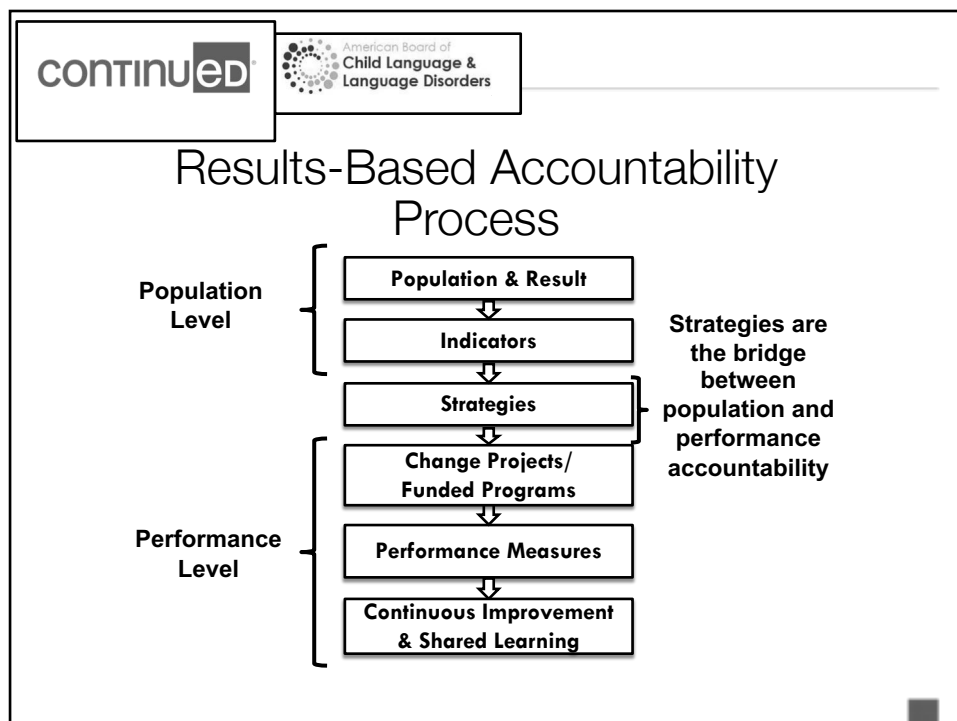
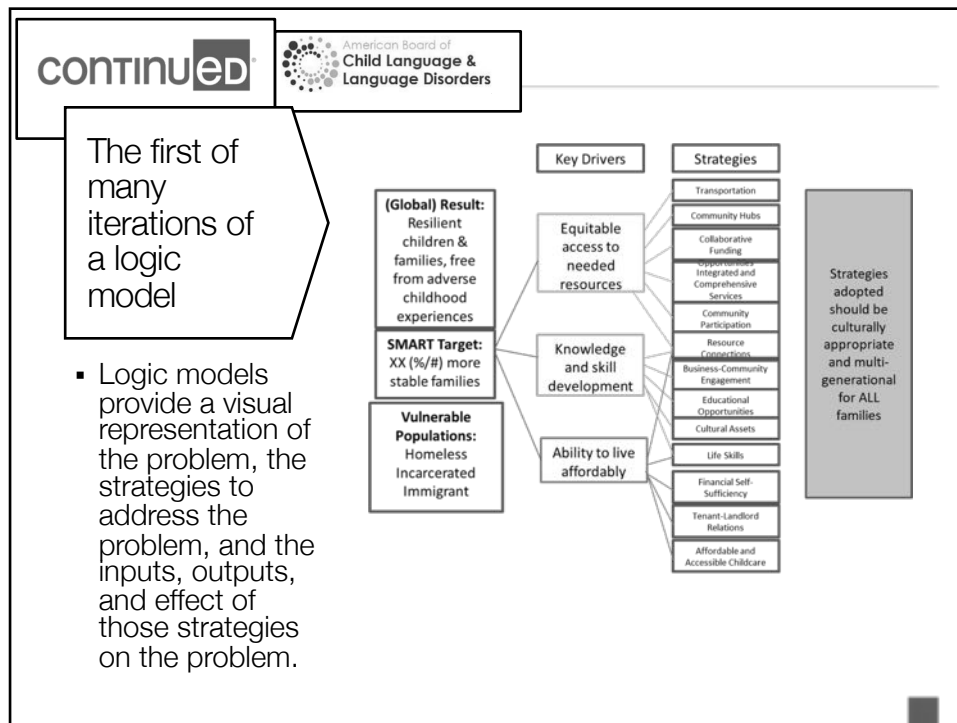


Dialogue Between Youth & Families

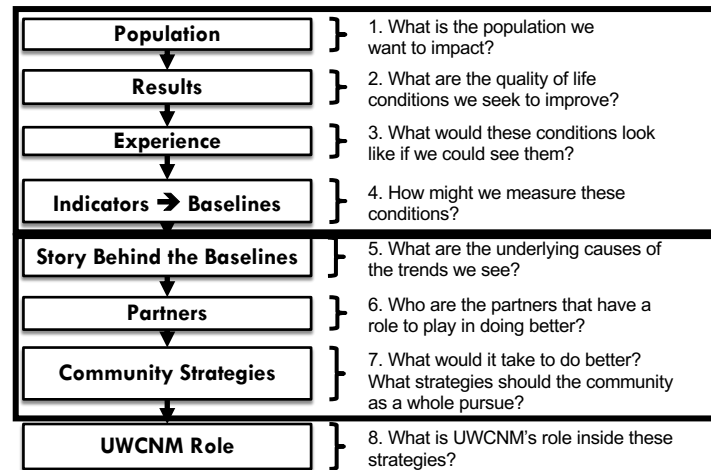


continued





Getting From Talk to Action



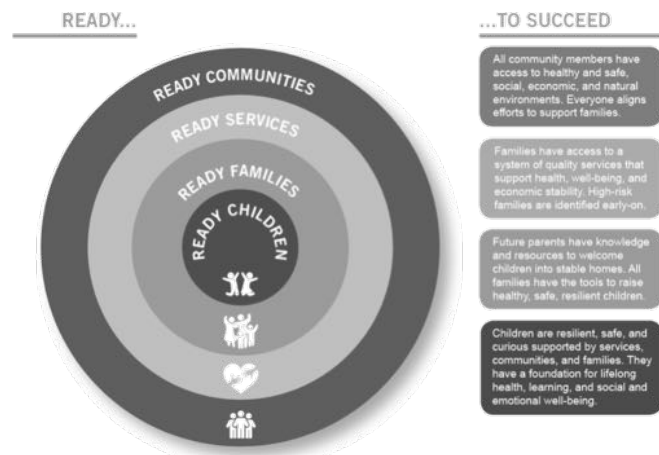
Where are we going?

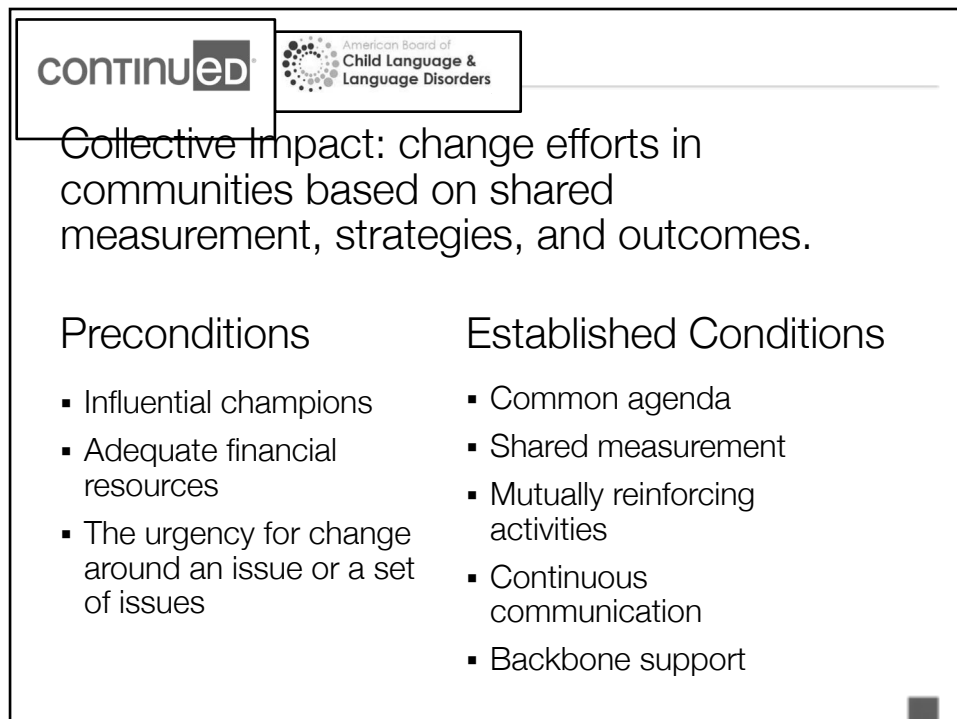
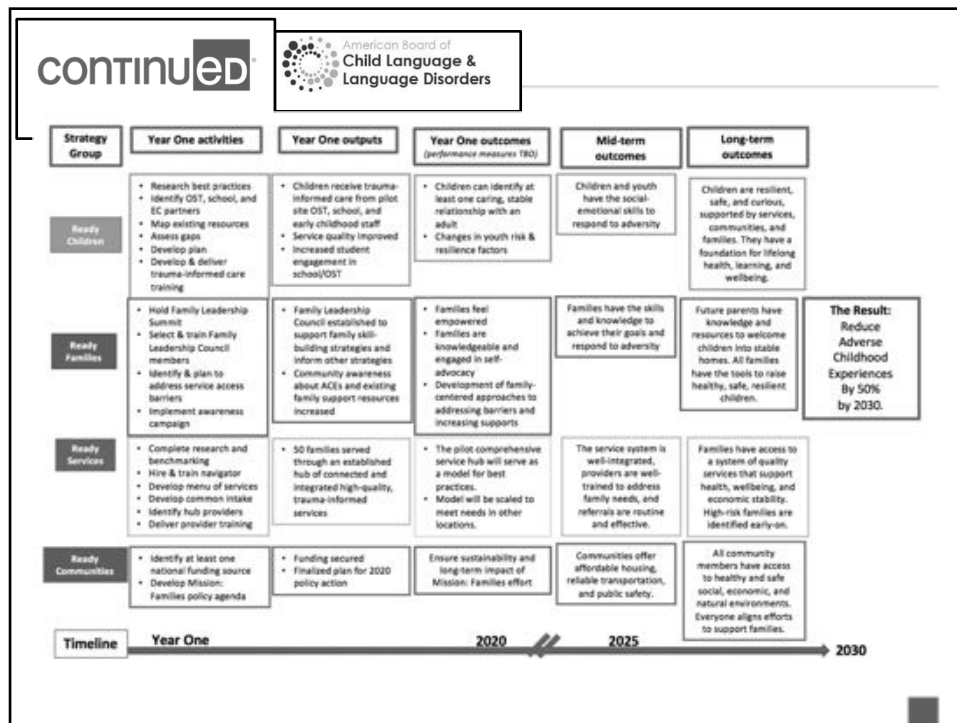
Next steps

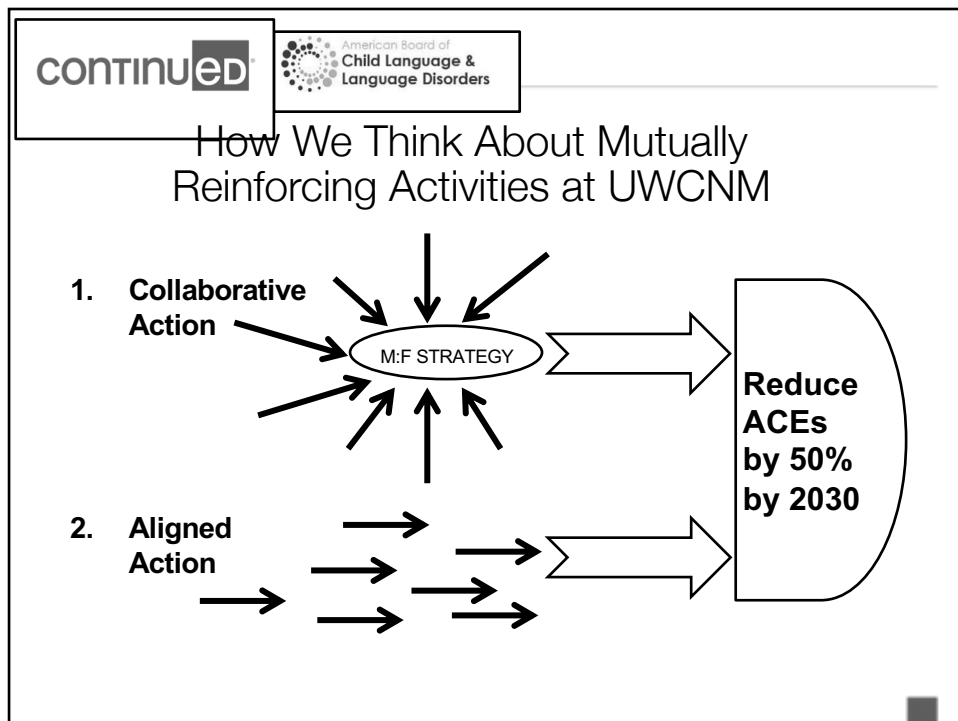
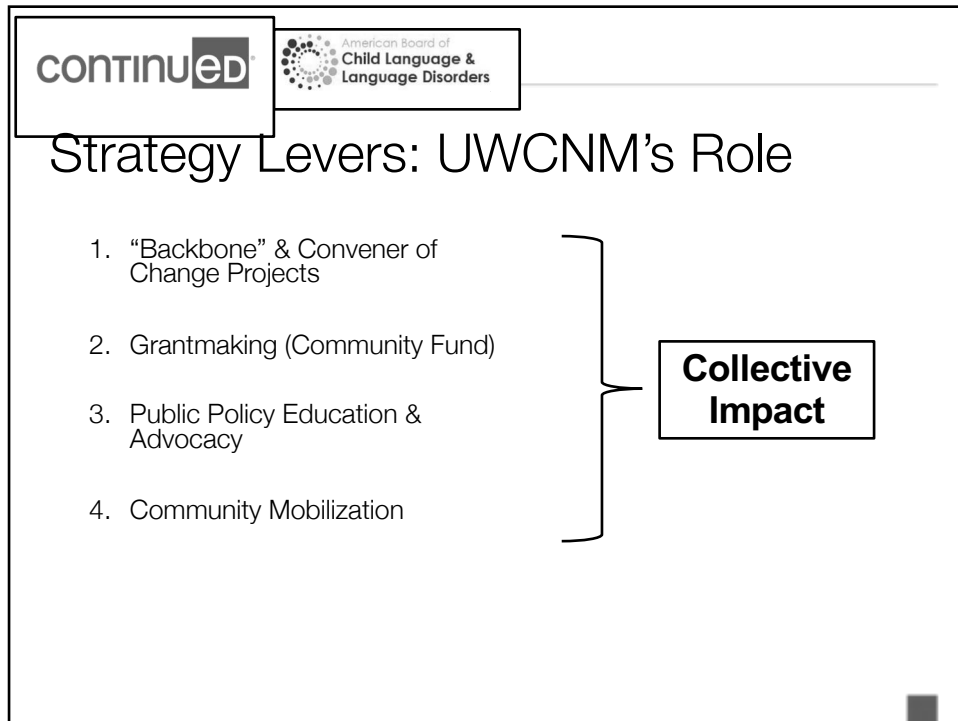
Ready Framework

- The ready framework is a comprehensive, community-wide approach to support protective factors that will build resilience and reduce ACEs in the 4-county area of central New Mexico.
- Based on other community-based research models
 - Strengthening Families model (Travis County, TX)
 - Building Resilient Communities Collaborative model (George Washington University)

Ready Framework







Lessons learned along the way and where we are now

Lessons

- Social connections are critical for social capital
 - Who you have invite to the table is important
- Community engagement only works with community voice
 - Collaborating with individuals affiliated by geographic proximity, special interest, or similar situations to address issues affecting the wellbeing of those individuals
- Challenges around collective measurement
- Constant change and evolution

Where we are now

- Ready communities
 - Building a visual model of community protective factors to inform policy and advocacy
- Ready services
 - Engaging service providers in an asset mapping exercise to identify assets and gaps to inform hub development
- Ready families
 - Held first family leadership summit in Bernalillo County with family needs survey
- Ready children
 - Conducting review of best practices around trauma-informed care
- Developing a community index to comprehensively measure education, health and well-being, employment, crime, and access to services

Q & A?