

If you are viewing this course as a recorded course after the live webinar, you can use the scroll bar at the bottom of the player window to pause and navigate the course.

This handout is for reference only. It may not include content identical to the powerpoint. Any links included in the handout are current at the time of the live webinar, but are subject to change and may not be current at a later date.

MOUNTING SPEECH GENERATING DEVICES AND TABLETS TO WHEELCHAIRS

Michelle L. Lange, OTR/L, ABDA, ATP/SMS



M. Lange 1.2015

Mounting AT to Wheelchairs

- Speech Generating Devices (SGDs)
 - Larger
 - Smaller (less than 5 lbs)
- Computers
 - Notebooks
 - Tablets



Dynamox T Series

M. Lange 1.2015

Poll Time

- Are you working with Mounting Systems?
 - I recommend them
 - I mount them
 - Nope
 - I would like to!

M. Lange 1.2015

Whose Job is This? Recommendation

- Partly, it comes down to funding
 - If the SLP orders a mount with the device, then the SLP may need to “spec” this out
 - If the wheelchair supplier orders the mount, they may “spec” this out
- Sometimes, it is the Occupational Therapist
 - The OTR may determine the optimal SGD access, placement and mounting system

M. Lange 1.2015

Whose Job is This? Ordering and Funding

- If the mount is ordered with the SGD, funding may be for both and the SLP typically does this
- If the mount is ordered with a new wheelchair frame, the wheelchair supplier may order the mount, or at least a new frame clamp
- If a mount is ordered alone, whoever can pursue funding may order

M. Lange 1.2015

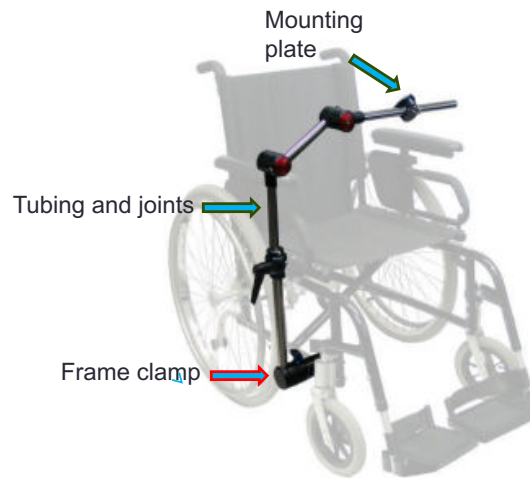
Whose Job is This: Mounting

- Who holds the Allen wrenches?
- Typically, whoever ordered the mount
- The wheelchair supplier often knows how, but if they did not pursue funding, they will not put on the mount
- Mounting is usually too difficult for a client or caregivers to do competently
- Whoever attaches the mounting system must be competent and assumes liability

M. Lange 1.2015

Terminology

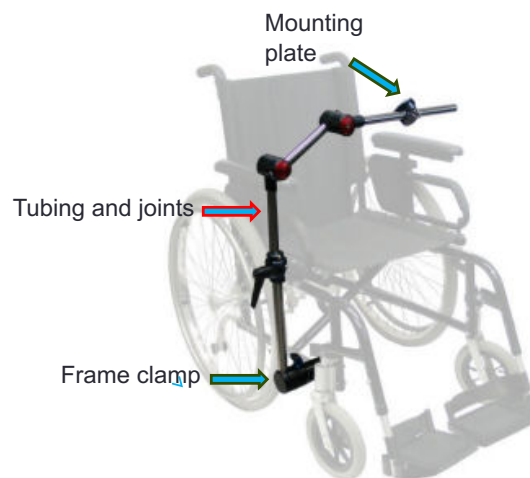
- Frame Clamp attaches to frame and is designed to fit a specific shape and diameter



M. Lange 1.2015

Terminology

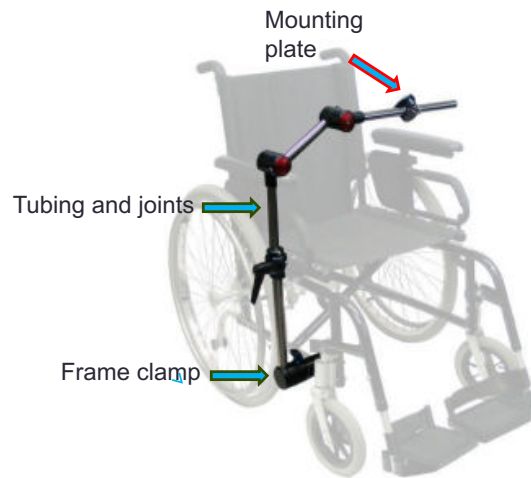
- Horizontal and/or vertical sections of tubing with or without joints dictate final position of mount



M. Lange 1.2015

Terminology

- Mounting Plate connects the mount to the AT device. A device adaptor may be required.



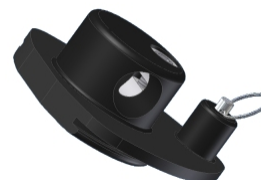
M. Lange 1.2015

Terminology

- SGD's must have an adaptor plate on the device, as well



Device Adaptor



Mounting Plate

M. Lange 1.2015

Why Mount?

- Access
 - Direct
 - Head Mouse
 - Eye Gaze
- Visual Regard
- Security
 - Falling
 - Theft



M. Lange 1.2015

How Do I Get Started?

- Device Type
- Device Placement
- Mount Placement

M. Lange 1.2015

How Do I Get Started?

- Device Type
 - Which device?
 - What mounting plate will be required?
 - Will a device adaptor be required for the device itself?
 - Choose appropriate mounting category



Prentke Romich
Accent

M. Lange 1.2015

How Do I Get Started?

- Device Placement
 - Determine approximately where the device needs to be placed
 - For optimal visual regard and access
 - Within boundaries of wheelchair so device doesn't get bumped
 - i.e. through doorways
 - Not blocking client's view of
 - Communication partner
 - Blackboard
 - Where they are propelling MWC or driving PWC



M. Lange 1.2015

How Do I Get Started?

- Mount Placement
 - Where will the frame clamp be placed based on desired device placement?
 - Place above tilt
 - Avoid moveable parts
 - Ensure mount can move out of the way for transfers
 - Fold, swing-away or remove
 - Ensure mobility base will not tip over from weight of mount and device if to the side during transfers



M. Lange 1.2015

Ordering Help

- Some Mounting manufacturers offer additional help
- For example, take photos from several directions holding the device where you want it in relation to the wheelchair
- They will spec out what you need!
 - REHAdapt VMS

M. Lange 1.2015

Questions?

M. Lange 1.2015

Mounting Speech Generating Devices
(SGDs)

M. Lange 1.2015

Mounting: SGD's

- Larger devices include:
 - Dynavox Maestro
 - PRC ECO, Essence
 - Tobii
- Smaller devices include:
 - Dynavox T series
 - PRC Accent
 - Saltillo NovaChat series



Dynavox

M. Lange 1.2015

Mounts for Larger SGD's

- Larger devices are bigger in dimension and weight
- Usually not a weight limit due to variety of configurations and usage
- Devices accessed by eye gaze always require a heavier capacity mount due to both weight and height requirements

M. Lange 1.2015

Mounts for Heavier SGDs

- BlueSky Designs
- CJT Enterprises
- Daedalus
- Dynavox
- Prentke Romich
- REHAdapt

M. Lange 1.2015

BlueSky Designs

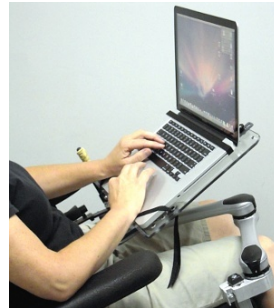
- Mount n Mover



M. Lange 1.2015

Specifications

- Pros:
 - Allows the user to independently move the mount in various positions for transfers and access. It can be especially helpful with Eye Gaze technologies.
 - Supports wide range of wheelchair frame sizes
 - Supports wide range of SGD's



M. Lange 1.2015

Specifications

- Cons:
 - Heavy
 - Bulky
 - Large frame clamp
 - Does not fold
- Cost
 - \$710-1300



M. Lange 1.2015

CJT Enterprises

- Profiler
- Profiler Angular



Profiler Angular

M. Lange 1.2015

Specifications

- Pros:
 - Fits most frames
 - Many options for placement on frame
 - Supports wide range of devices



Profiler

M. Lange 1.2015

Specifications

- Cons:
 - Heavy
 - Bulky
 - Large frame clamp
 - Does not fold
- Cost:
 - \$856-1400
 - Standard and Super versions



M. Lange 1.2015

Profiler Angular

- Can attach under the seat pan or behind seat back



M. Lange 1.2015

Daedalus

- Rigid
- Folding
- Locking Swing Away
- Rear Folding
- Positioner

M. Lange 1.2015

Specifications

- Pros
 - Wide variety of frame clamps, including custom sizes, locking clamp for tilt frames, side clamp for placement on seat rail
 - Clamp takes up little space on frame
 - Supports many devices
 - Folding version



M. Lange 1.2015

Specifications

- Cons
 - Heavy
 - Pin in frame clamp can slip during tilt if locking clamp is not used
- Cost
 - \$600 - 1100



M. Lange 1.2015

Rigid

- Rigid
- Lighter than others
- Simple
- Less costly



M. Lange 1.2015

Folding

- Folds away to side
- Allows transfers without base tipping
- Device is facing out – risk of damage



M. Lange 1.2015

Rear Folding

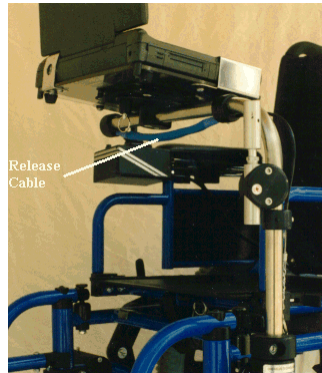
- Very heavy
- Non-removable
- Allows device to remain on chair out of the way, even during transport



M. Lange 1.2015

Locking Swing Away

- Allows client to pull down on cable and push mount to the side for independent transfers
- Can be difficult to operate



M. Lange 1.2015

Positioner

- Different joints than other Daessy mounts
- Less bulky
- More planes of adjustment at joints



M. Lange 1.2015

DynaVox

- ConnectIT
- Made by REHAdapt



M. Lange 1.2015

Specifications

- Pros
 - Lighter weight than other mounts in this category
 - Fits most frames
 - Frame clamp is small
 - Tubes flow through joints for increased adjustability



M. Lange 1.2015

Specifications

- Cons:
 - Only supports Dynavox products
 - Does not fold
- Cost:
 - \$1100 base



M. Lange 1.2015

Prentke Romich

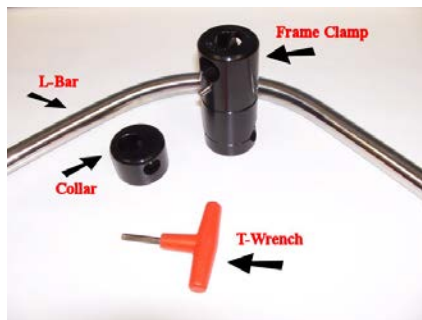
- Wheelchair Mounting Kit (WCMK)
 - Basically a Daessy Rigid Mount



M. Lange 1.2015

Specifications

- Pros:
 - Simple
 - Easy to mount
 - Less costly than some other options



M. Lange 1.2015

Specifications

- Cons:
 - Rigid with little adjustment
 - Heavy
 - Only supports PRC products
- Cost
 - \$675



M. Lange 1.2015

REHAdapt

- Monty 3D



M. Lange 1.2015

Specifications

- Pros:
 - Lighter weight than other mounts in this category
 - Fits most frames
 - Small frame clamp
 - Tubes flow through joints for more adjustability
 - Works with a variety of devices
 - 3 positions for transfers
 - Knob or tool adjustment versions



M. Lange 1.2015

Specifications

- Pros:
 - Folding version (3DK)
 - Heavy duty version for eye gaze
 - systems (3D eye)



M. Lange 1.2015

Specifications

- Cons
 - Pin can slip during tilt without Swivel Joint with lever (not included on standard 3D)
- Cost
 - \$755 - 1100



M. Lange 1.2015

Power Options

- Some clients need to reposition a SGD for varying access methods (i.e. Direct and Eye Gaze)
- Some clients need to reposition a SGD for visual field during mobility
- Some clients need to move a SGD out of the way for transfers

M. Lange 1.2015

Power Options

- Power mount
- Motion Concepts



M. Lange 1.2015

Mounts for Smaller SGDs

- Smaller in dimension and weight
- If client uses excessive force against the device and/or mount, a heavier mount may be indicated
- Generally lack the height available in heavier mounts
 - i.e. for eye gaze



Nova Chat 7

M. Lange 1.2015

Mounts for Smaller SGDs

- CJT Enterprises
- Daedalus
- REHAdapt

M. Lange 1.2015

CJT Enterprises

- ProLite



M. Lange 1.2015

Specifications

- Pros:
 - Holds up to 5 lbs
 - Smaller and lighter than standard mounts



M. Lange 1.2015

Specifications

- Cons:
 - Some frames require larger frame clamp
- Cost:
 - \$565.00



M. Lange 1.2015

Daedalus

- M series
 - Mini Adjustable Mount
 - Mini Folding
 - Mini Rigid



Mini Adjustable

M. Lange 1.2015

Specifications

- Pros:
 - Smaller and lighter than standard mounts
 - Holds up to 10 lbs
 - 3 versions



Mini Folding

M. Lange 1.2015

Specifications

- Cons:
 - Heavier than many other mounts in this category
- Cost:
 - \$900



Mini Rigid

M. Lange 1.2015

REHAdapt

- Tablet Mount
 - Supports other device adaptors for smaller SGD's



with SuperClamp

M. Lange 1.2015

Specifications

- Pros:
 - Smaller and lighter than standard mounts
 - Versions include knob (QS) or tool adjustment
 - Frame clamps for most size frames
 - SuperClamp for unusual sizes
 - Device adaptors and mounting plates for most lightweight SGD's, including tablet based devices



QS version

M. Lange 1.2015

Specifications

- Cons:
 - None that I have come up with...yet
- Cost:
 - \$275-355

IC version for
wheelchair



M. Lange 1.2015

Questions?

M. Lange 1.2015

Mounting Computers

- Notebook/Laptop
- Tablet

M. Lange 1.2015

Mounting Notebooks

- BlueSky
- CJT Enterprises
- Daedalus

M. Lange 1.2015

BlueSky Designs

- Mount 'N Mover



M. Lange 1.2015

CJT Enterprises

- Profiler
- Angular



M. Lange 1.2015

Daedalus

- Daessy series



M. Lange 1.2015

Questions?

M. Lange 1.2015

Poll Time

- Are you being asked to mount Tablets?
 - All the time!
 - Occasionally
 - Never

M. Lange 1.2015

Mounting Tablets

- REHAdapt
- Stealth
- Therafin
- Others

M. Lange 1.2015

Mounting Tablets

- There are an ever increasing amount of Tablet mounts
- Some do not hold their position well or offer adequate positioning, so are not included here

M. Lange 1.2015

REHAdapt

- Tablet Mount
- Pros:
 - Versions include knob or tool adjustment
 - Frame clamp fits most size frames
 - SuperClamp available for unusual sizes
 - Various tablet mounting plates available



M. Lange 1.2015

REHAdapt

- Cons:
 - None that I have come up with yet...
- Cost:
 - \$275-355



M. Lange 1.2015

Stealth Products

- Tablet Mount
- Pros:
 - Various links can be added or removed to achieve desired position
 - Adjustable mounting plate holds various size tablets
 - Swing away option



M. Lange 1.2015

Stealth Products

- Cons:
 - Heavy
- Cost:
 - \$375 Gatlin style
 - \$555 Standard



M. Lange 1.2015

Therafin Corporation

- Communication Mount
- Pros:
 - Holds iPads, iPad minis, 7" and 10" tablets
 - Extension kit adds 3-6" to any mount



M. Lange 1.2015

Therafin Corporation

- Communication Mount
- Cons:
 - Frame clamps are limited
- Cost:
 - \$510 - 815



M. Lange 1.2015

Other

- Resourceful? Check out RAM mounts
- <http://www.rammount.com>



M. Lange 1.2015

Funding

- Can you get funding for a Tablet mount?
- Yes – if Tablet is being used for communication
- No – most of the time

M. Lange 1.2015

Questions?

M. Lange 1.2015

Thanks!

M. Lange 1.2015

References:

- Wheelchair Mounting Systems Comparison Matrix, www.atilange.com, under Resources
- Carrington, Patrick, Amy Hurst, and Shaun K. Kane. "How power wheelchair users choose computing devices." *Proceedings of the 15th International ACM SIGACCESS Conference on Computers and Accessibility*. ACM, 2013.
- Lin, Wendy, et al. "Mobility-assistive technology in progressive neuromuscular disease." *Physical medicine and rehabilitation clinics of North America* 23.4 (2012): 885-894.

M. Lange 1.2015

Contact Information

- Michelle L. Lange, OTR, ABDA, ATP/SMS
- MichelleLange@msn.com
- www.atilange.com